



The Commonwealth

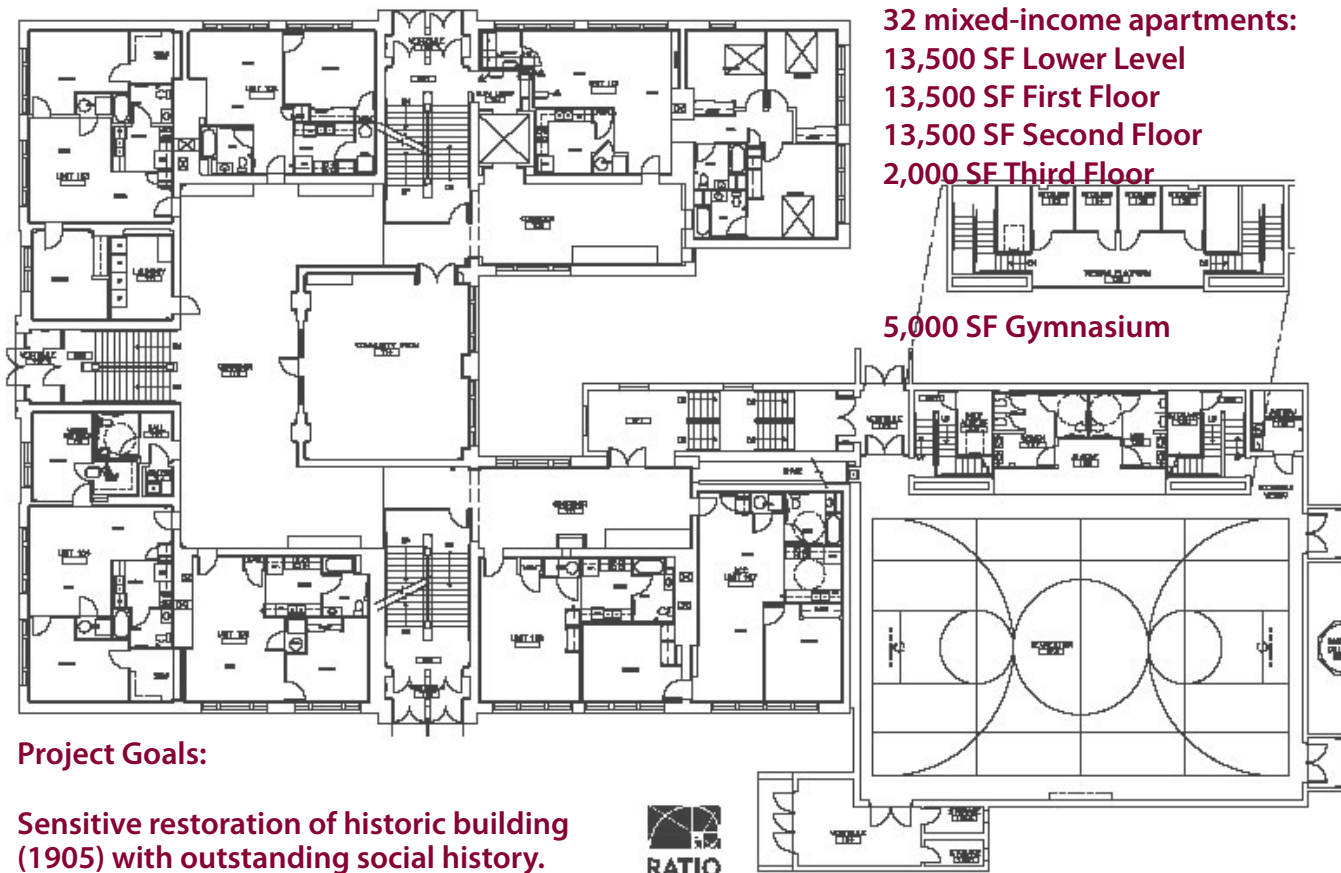
former IPS Lucretia Mott School 3

23 N. Rural Street (NE quadrant of E. Washington and N. Rural Streets).

Redevelopment of historic Lucretia Mott IPS School 3 building into 32 units of mixed-income apartments, community space, gymnasium, and rooftop sports arena.

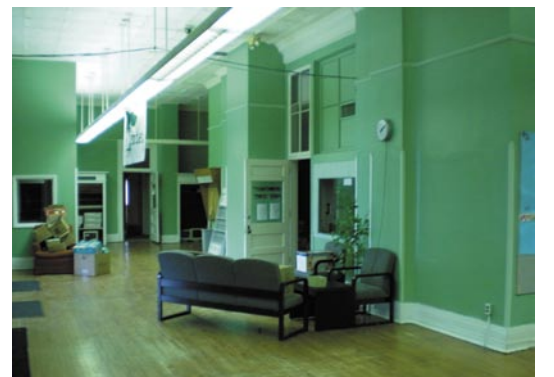
Located in the Englewood neighborhood on the near eastside and adjacent to the historic East Washington Branch Library, Englewood Church and Daystar Childcare (a United Way Success by Six daycare).

Partners: Co-developed by Englewood Community Development Corporation and John H. Boner Community Center.



32 mixed-income apartments:
 13,500 SF Lower Level
 13,500 SF First Floor
 13,500 SF Second Floor
 2,000 SF Third Floor

5,000 SF Gymnasium



Project Goals:

Sensitive restoration of historic building (1905) with outstanding social history.

Pursue LEED status, high performance materials, maximum energy efficiency and water conservation.

Create a vibrant and engaging environment with community events, residents, and active recreational spaces.

Convene conversations and exhibit best practices around asset-based and comprehensive community development.

Special Features:

Central location, easy access to multiple bus lines (8, 26, and 3).

School floor plan and historic elements still intact.

Rooftop soccer and hockey arena.

Contact: David Price
 317.496.8992
david.engage@gmail.com

(top to bottom) First floor common space prior to renovation, 2009. School 3 in the 20s. School 3 in 1949, bordered by a privet hedge.